

# PRODUCT MONOGRAPH

**PrSALOFALK®**

Mesalamine Suppositories  
500 mg and 1000 mg

LOWER GASTROINTESTINAL TRACT ANTI-INFLAMMATORY

A07EC02

APTALIS PHARMA CANADA INC.  
597, Laurier Boulevard  
Mont-Saint-Hilaire, Québec  
CANADA J3H 6C4

Date of Preparation:  
January 11, 2013

Date of Revision:  
December 30, 2014

Submission Control No: 178877

**Table of Contents**

**PART I: HEALTH PROFESSIONAL INFORMATION.....3**  
SUMMARY PRODUCT INFORMATION .....3  
INDICATIONS AND CLINICAL USE.....3  
CONTRAINDICATIONS .....3  
WARNINGS AND PRECAUTIONS.....4  
ADVERSE REACTIONS.....6  
DRUG INTERACTIONS .....9  
DOSAGE AND ADMINISTRATION .....10  
OVERDOSAGE .....10  
ACTION AND CLINICAL PHARMACOLOGY .....11  
STORAGE AND STABILITY .....12  
SPECIAL HANDLING INSTRUCTIONS .....12  
DOSAGE FORMS, COMPOSITION AND PACKAGING .....12

**PART II: SCIENTIFIC INFORMATION .....14**  
PHARMACEUTICAL INFORMATION.....14  
CLINICAL TRIALS.....15  
DETAILED PHARMACOLOGY .....15  
TOXICOLOGY .....16  
REFERENCES .....19

**PART III: CONSUMER INFORMATION.....24**

Pr SALOFALK®

Mesalamine Suppositories  
500 mg and 1000 mg

**PART I: HEALTH PROFESSIONAL INFORMATION**

**SUMMARY PRODUCT INFORMATION**

| <b>Route of Administration</b> | <b>Dosage Form / Strength</b> | <b>Clinically Relevant Non-medicinal Ingredients</b>                                       |
|--------------------------------|-------------------------------|--|
| Rectal                         | Suppositories<br>500, 1000 mg | None<br><i>For a complete listing see DOSAGE FORMS, COMPOSITION AND PACKAGING section.</i> |

**INDICATIONS AND CLINICAL USE**

SALOFALK® (mesalamine suppositories) 500 and 1000 mg are indicated:

- in the management of ulcerative proctitis.
- as adjunctive therapy in more extensive distal ulcerative colitis (DUC).

**Geriatrics**

Clinical studies with SALOFALK® suppositories, 500 mg and 1000 mg have not been performed in the geriatric population.

**Pediatrics**

Information on the safety and efficacy of SALOFALK® suppositories in children is limited. Therefore, use should be limited to situations where a clear benefit is expected. SALOFALK® suppositories should not be used in infants under two years of age.

**CONTRAINDICATIONS**

SALOFALK® (mesalamine suppositories) is contraindicated in:

- patients with severe renal impairment ( $GFR < 30 \text{ ml/min/1.73m}^2$ ) and/or severe hepatic impairment (see Warnings and Precautions).
- patients who are hypersensitive to this drug or to any ingredient in the formulation or component of the container. For a complete listing, see the Dosage Forms, Composition and Packaging section of the product monograph.

- cases of existing gastric or duodenal ulcer.
- patients with urinary tract obstructions.
- infants under two years of age.

Patients hypersensitive to salicylates, including acetylsalicylic acid (e.g. Aspirin<sup>®</sup>), may also be hypersensitive to this medication.

## WARNINGS AND PRECAUTIONS

### **General**

There have been reports of hepatic failure and increased liver enzymes in patients with pre-existing liver disease when treated with 5-ASA/Mesalazine products. Therefore, SALOFALK<sup>®</sup> (mesalamine suppositories) is contraindicated in patients with severe hepatic impairment (see Contraindications). In patients with mild to moderate liver function impairment, caution should be exercised and SALOFALK<sup>®</sup> (mesalamine suppositories) should only be used if the expected benefit clearly outweighs the risks to the patients.

SALOFALK<sup>®</sup> (mesalamine suppositories) should be used only if the benefits clearly outweigh the risks in patients with underlying, bleeding or clotting disorders as well as during pregnancy and lactation.

Patients with renal dysfunction, or elevated Blood Urea Nitrogen (BUN), or elevated serum creatinine, or with proteinuria, should be carefully monitored while receiving SALOFALK<sup>®</sup>.

Concomitant treatment with mesalamine can increase the risk of myelosuppression in patients receiving azathioprine or 6-mercaptopurine<sup>1-3</sup>.

### **Effects on Ability to Drive and Use Machinery**

There are no data available on the effects of mesalamine on ability to drive and use machines.

### **Carcinogenesis and Mutagenesis**

Carcinogenicity studies in animals and mutagenicity tests were negative (see TOXICOLOGY)<sup>4</sup>.

### **Cardiovascular**

Cardiac side effects, including pericarditis and myocarditis have been uncommonly reported with the use of mesalamine<sup>5</sup>.

Cases of pericarditis have also been reported as manifestations of inflammatory bowel disease. Discontinuation of mesalamine may be warranted in some cases, but rechallenge with mesalamine can be performed under careful clinical observation should the continued therapeutic need for mesalamine be present<sup>6,7</sup>.

### **Gastrointestinal**

Epigastric pain, also commonly associated with inflammatory bowel disease and prednisone or sulfasalazine (SAS) therapy (18%)<sup>8</sup>, should be investigated in order to exclude pericarditis and pancreatitis either as adverse drug reactions to mesalamine or secondary manifestations of inflammatory bowel disease.

### **Renal**

Reports of renal impairment, including minimal change nephropathy, and acute or chronic interstitial nephritis have been associated with mesalamine products and pro-drugs of mesalamine. SALOFALK<sup>®</sup> (mesalamine suppositories) is contraindicated in patients with severe renal impairment (see Contraindications). In patients with mild to moderate renal dysfunction, caution should be exercised and SALOFALK<sup>®</sup> (mesalamine suppositories) should be used only if the benefits outweigh the risks.

Patients on mesalamine, especially those with pre-existing renal disease, should be carefully monitored with urinalysis, and BUN and creatinine testing. Initial assessment and periodic monitoring of the renal function is recommended since mesalamine is substantially excreted by the kidney, and prolonged mesalamine therapy may damage the kidneys.

Because elderly patients are more likely to have decreased renal function, closer monitoring of the renal function may be needed.

### **Sensitivity/Resistance**

Caution should be exercised when mesalamine (5-ASA) is initially used in patients known to be allergic to sulfasalazine. These patients should be instructed to discontinue therapy if sign of rash or pyrexia become apparent. In case of an allergic reaction, appropriate measures (standard of care) should be taken.

### **Acute Intolerance Syndrome**

Mesalamine has been implicated in the production of an acute intolerance syndrome characterized by cramping, acute abdominal pain and bloody diarrhoea, sometimes fever, headache and a rash; in such cases prompt withdrawal is required. The patient's history of sulfasalazine intolerance, if any, should be re-evaluated. If a rechallenge is performed later in order to validate the hypersensitivity, it should be carried out under close supervision and only if clearly needed, giving consideration to reduced dosage. The possibility of increased absorption of mesalamine and concomitant renal tubular damage as noted in the preclinical studies must be kept in mind. Patients on concurrent mesalamine products which contain or release mesalamine and those with pre-existing renal disease should be carefully monitored with urinalysis, and BUN and creatinine testing.

### **Special Populations**

#### **Pregnant Women**

SALOFALK<sup>®</sup> should be used during pregnancy only if the benefits clearly outweigh the risks to the foetus. 5-ASA is known to cross the placental barrier, and no clinical studies have been performed in pregnant women<sup>1,9</sup>.

Animal studies did not show evidence of impaired fertility or harm to the foetus due to mesalamine (see TOXICOLOGY), however, because animal reproduction studies are not always predictive of human response, SALOFALK<sup>®</sup> should be used during pregnancy only if clearly needed.

### **Nursing Women**

There are no clinical trial studies in nursing women. SALOFALK<sup>®</sup> should be used in nursing women only if the benefits to the mother clearly outweigh the risks to the child. Mesalamine and its main metabolite N-acetyl-5-ASA are excreted in breast milk<sup>9-12</sup>. The concentration of mesalamine is much lower than in maternal blood, but the metabolite N-acetyl-5-ASA appears in similar concentrations.

When mesalamine is used in nursing women, infants should be monitored for changes in stool consistency as hypersensitivity reactions manifested as diarrhoea in the infants have been reported<sup>1,13-15</sup>.

### **Pediatrics**

Information on the safety and efficacy of SALOFALK<sup>®</sup> suppositories in children is limited.

SALOFALK<sup>®</sup> should not be used in infants/toddlers aged less than 24 months.

### **Geriatrics**

Clinical studies of mesalamine did not include sufficient number of subjects aged 65 and over to determine whether they respond differently from younger subjects. Other reported clinical experience has not identified differences in responses between the elderly and younger patients. In general, dose selection for an elderly patient should be cautious, reflecting the greater frequency of decreased hepatic, renal, or cardiac function, and of concomitant disease or other drug therapy.

Mesalamine is substantially excreted by the kidney, and the risk of toxic reactions to this drug may be greater in patients with impaired renal function. Because elderly patients are more likely to have decreased renal function, it may be useful to monitor renal function.

## **ADVERSE REACTIONS**

### **Adverse Drug Reaction Overview**

Hypersensitivity reactions have been reported in a sub-group of patients known to be allergic to sulfasalazine including rash<sup>16-19</sup>, pyrexia<sup>16-19</sup>, and dizziness<sup>16,18</sup> with reactions occurring at the onset of therapy and resolving promptly following discontinuation<sup>16,17</sup>.

Other manifestations of hypersensitivity reported with mesalamine include acute pancreatitis<sup>19,20</sup>, hepatitis<sup>19</sup>, pericarditis, interstitial nephritis, interstitial pneumonia and pleural effusion. Interstitial pneumonia, pancreatitis and pericarditis have also been reported as manifestations of

inflammatory bowel disease<sup>22</sup>.

As with all 5-ASA products, exacerbations of ulcerative colitis characterized by cramping<sup>18</sup> acute abdominal pain<sup>18-20</sup> and diarrhoea<sup>18,19,21</sup> have been reported with mesalamine.

Other reported side effects include headache<sup>18,19,21,23</sup>, flatulence<sup>18</sup>, nausea<sup>18,19,21,23</sup>, and hair loss<sup>17,18</sup>, but do not appear to be common. Retreatment is not always associated with repeated hair loss. Aplastic anaemia has been reported in the literature with unspecified formulations of mesalamine.

### **Clinical Trial Adverse Drug Reactions**

*Because clinical trials are conducted under very specific conditions the adverse reaction rates observed in the clinical trials may not reflect the rates observed in practice and should not be compared to the rates in the clinical trials of another drug. Adverse drug reaction information from clinical trials is useful for identifying drug-related adverse events and for approximating rates.*

**Table 1: Clinical Trial Adverse Events Reported in > 0.1% of Patients**

| <b>SYSTEM ORGAN CLASS<br/>Preferred Term</b>                    | <b>SALOFALK®<br/>N=841<br/>%</b> | <b>Placebo<br/>N=176<br/>%</b> |
|---|----------------------------------|--------------------------------|
| <b>Cardiac Disorders</b>  |                                  |                                |
| Pericarditis  | 0.1                              | 0.0                            |
| <b>Gastrointestinal Disorders</b>                               |                                  |                                |
| Abdominal pain  | 7.9                              | 7.9                            |
| Flatulence  | 6.0                              | 4.5                            |
| Nausea  | 5.6                              | 6.8                            |
| Diarrhoea   | 2.1                              | 3.9                            |
| Abdominal distension  | 1.4                              | 1.1                            |
| Haemorrhoids  | 1.3                              | 0.0                            |
| Proctalgia  | 1.1                              | 0.0                            |
| Constipation  | 0.9                              | 2.2                            |
| Anorectal discomfort  | 0.5                              | 1.7                            |
| Pancreatitis  | 0.1                              | 0.0                            |
| Condition aggravated  | 0.1                              | 0.0                            |
| <b>General Disorders and Administration Site<br/>Conditions</b> |                                  |                                |
| Fatigue   | 3.3                              | 4.5                            |
| Pyrexia   | 3.0                              | 0.0                            |
| Administration site reaction                                    | 1.3                              | 0.5                            |
| Oedema peripheral   | 0.5                              | 6.2                            |
| Asthenia  | 0.1                              | 2.2                            |

| <b>SYSTEM ORGAN CLASS<br/>Preferred Term</b>                 | <b>SALOFALK®<br/>N=841<br/>%</b> | <b>Placebo<br/>N=176<br/>%</b> |
|--|----------------------------------|--------------------------------|
| <b>Infections and Infestations</b>                           |                                  |                                |
| Influenza  | 5.2                              | 0.5                            |
| Urinary tract infection                                      | 0.5                              | 2.2                            |
| Upper respiratory tract infection                            | 0.1                              | 0.5                            |
| <b>Musculoskeletal, Connective Tissue and Bone Disorders</b> |                                  |                                |
| Arthralgia   | 2.0                              | 1.1                            |
| Back pain  | 1.3                              | 0.5                            |
| <b>Nervous System Disorders</b>                              |                                  |                                |
| Headache   | 6.7                              | 11.3                           |
| Dizziness  | 1.7                              | 2.8                            |
| Insomnia   | 0.1                              | 1.7                            |
| <b>Respiratory, Thoracic and Mediastinal Disorders</b>       |                                  |                                |
| Pharyngolaryngeal pain                                       | 2.0                              | 2.8                            |
| <b>Skin and Subcutaneous Tissue Disorders</b>                |                                  |                                |
| Rash   | 2.8                              | 2.2                            |
| Spots  | 2.2                              | 5.1                            |
| Pruritus   | 1.1                              | 0.5                            |
| Alopecia   | 0.8                              | 1.1                            |

### **Post-Market Adverse Drug Reactions**

The following adverse reactions have been identified during the post-approval use of SALOFALK® suppository. Because these reactions are reported voluntarily from a population of uncertain size, it is not always possible to reliably estimate their frequency or establish a causal relationship to drug exposure.

**Cardiac Disorders:** Myocarditis, Pericarditis

**Eye Disorders:** Eye swelling

**Gastrointestinal Disorders:** Abdominal pain (upper, lower), Abdominal cramps, Abdominal distension, Abnormal faeces, Anal pruritus, Anorectal discomfort, Constipation, Diarrhoea, Faeces discoloured, Flatulence, Frequent bowel movements, Mucus stools, Nausea, Painful defecation, Pancreatitis, Proctalgia, Rectal discharge, Rectal tenesmus, Stomach discomfort, Vomiting

**General Disorders And Administration Site Conditions:** Fatigue, Medication residue, Pain, Pyrexia

**Nervous System Disorders:** Burning sensation, Dizziness, Headache



**Respiratory, Thoracic And Mediastinal Disorders:** Dyspnoea

**Skin And Subcutaneous Tissue Disorder:** Alopecia, Erythema, Pruritus, Rash, Urticaria

The following adverse events have been identified during the post-approval use of mesalamine products:

**Blood and Lymphatic System Disorders:** Agranulocytosis

**Immune System Disorder:** Anaphylactic reaction, Drug Reaction with Eosinophilia and Systemic Symptoms (DRESS), Stevens-Johnson Syndrome (SJS)

## **DRUG INTERACTIONS**

### **Overview**

Interaction between azathioprine, 6-mercaptopurine and aminosaliclates (including mesalamine) can increase the risk of leucopenia<sup>1-3</sup>. Other potential interactions with a number of drugs could occur (see Drug-Drug Interactions).

### **Drug-Drug Interactions**

Interaction between azathioprine, 6-mercaptopurine and aminosaliclates including mesalamine, has been reported with oral mesalamine. Concomitant treatment with mesalamine can increase the risk of myelosuppression in patients receiving azathioprine or 6-mercaptopurine. An increase in whole blood 6-thioguanine nucleotide (6-TGN) concentrations has been reported although the mechanism of this interaction remains unclear<sup>1-3</sup>.

Mesalamine could also increase renal and hematologic toxicity of methotrexate by additive effect and diminished absorption of folic acid<sup>24</sup>.

The hypoglycemic effect of sulfonylureas may be enhanced. Interactions with coumarin, methotrexate, probenecid, sulfapyrazone, spironolactone, furosemide and rifampicin cannot be excluded. Potentiation of undesirable glucocorticoid effects on the stomach is possible.

A theoretical interaction of salicylates with Varicella Virus Vaccine (chicken pox vaccine) might increase the risk of Reye's syndrome; as a result, the use of salicylates (including mesalamine) is discouraged for six weeks following Varicella vaccination<sup>1,25</sup>.

Drug-food, drug-herb, or drug-laboratory interactions have not been studied.

### **Drug-Laboratories Test Interactions**

Several reports of possible interference with measurements, by liquid chromatography, of urinary normetanephrine causing a false-positive test result have been observed in patients exposed to sulfasalazine or its metabolite, mesalamine/mesalazine.<sup>54.55.56</sup>

## DOSAGE AND ADMINISTRATION

### **Recommended Dose and Dosage Adjustment**

One 500 mg SALOFALK<sup>®</sup> rectal suppository is self-administered on a twice a day or three times a day basis. One 1000 mg SALOFALK<sup>®</sup> rectal suppository is self-administered on a once daily basis, at bedtime. The usual adult dose is 1.0 - 1.5 g/day and dosing is continued until a significant response is achieved or until the patient achieves remission. Dose tapering is recommended. Abrupt discontinuation is not recommended. Best results are expected with prolonged retention.

### **Missed Dose**

If a dose of SALOFALK<sup>®</sup> is missed, it should be used as soon as possible, unless it is almost time for the next dose. A patient should not use two SALOFALK<sup>®</sup> doses at the same time to make up for a missed dose.

### **Administration**

SALOFALK<sup>®</sup> suppositories are self-administered, one 500 mg suppository 2 or 3 times/day, and one 1000 mg suppository 1 time daily at bedtime. The suppository should be retained for 1 to 3 hours or longer to achieve the maximum benefit. While the effect of the suppositories may be seen within 3 to 21 days, the usual course of therapy would be from 3 to 6 weeks depending on symptoms and sigmoidoscopic findings.

### **Patient Instructions:**

- I. Detach one suppository from the strip of suppositories.
- II. Hold suppository upright and carefully remove the plastic wrapper.
- III. Avoid excessive handling of suppository, which is designed to melt at body temperature.
- IV. Insert suppository completely into rectum with gentle pressure, pointed end first.
- V. A small amount of lubricating gel may be used on the tip of the suppository to assist insertion.

In children, information on the safety and efficacy of mesalamine suppositories is limited. Therefore, use should be limited to situations where a clear benefit is expected.

## OVERDOSAGE

There has been no clinical experience with mesalamine overdose. However, because mesalamine is an aminosalicylate, the symptoms of overdose may mimic the symptoms of salicylate overdose; therefore, measures used to treat salicylate overdose may be applied to mesalamine overdose. Under ordinary circumstances, local mesalamine absorption from the colon is limited. There is no specific antidote and treatment is symptomatic and supportive.

|   |
|---|
| For management of a suspected drug overdose, contact your regional Poison Control Centre. |
|---|

## **ACTION AND CLINICAL PHARMACOLOGY**

### **Mechanism of Action**

The mechanism of action of mesalamine (5-aminosalicylic acid, 5-ASA), is not fully understood, but appears to be topical rather than systemic. Inflammatory intestinal disease is often accompanied by diffuse tissue reactions including ulceration and cellular infiltration of lymphocytes, plasma cells, eosinophils, polymorphonuclear cells and activated phagocytic cells<sup>26</sup>.

The interference of mesalamine with either leukotriene or prostaglandin metabolism may play a major role in suppressing the inflammatory response mechanism<sup>26-32</sup>. 5-ASA prevents accumulation of thromboxane B2 and 6-keto-prostaglandin F1<sup>27</sup>. Both 5-ASA and SAS reverse H<sub>2</sub>O<sub>2</sub> and Cl<sup>-</sup> secretion and increase Na<sup>+</sup> secretion in experimentally-induced colitis in guinea pigs<sup>33</sup>. SAS and 5-ASA are known to inhibit polymorphonuclear cell migration possibly via lipooxygenase inhibition<sup>32</sup> at concentrations lower than those required to inhibit prostaglandin synthesis. It is thus possible that both SAS and 5-ASA are capable of inhibiting both pathways via lipooxygenase inhibition<sup>26</sup>.

Intestinal secretion is stimulated not only by prostaglandins but also by the metabolites of arachidonic acid generated via the lipooxygenase pathway<sup>26,32,34</sup>. Upon phagocytic activation and arachidonic acid metabolism activation, reactive oxygen metabolites are generated<sup>35</sup>. 5-ASA acts as a dose dependent<sup>35</sup> antioxidant which scavenges oxygen derived free radicals produced by activated phagocytes<sup>26,36</sup>. In addition, 5-ASA associates with the membrane surface, allowing chain breaking anti-oxidant activity when peroxidation is initiated within the membrane. 5-ASA is able to block initiation of oxidation from solution as well as propagation within the membrane<sup>37</sup>. 5-ASA also inhibits the formation of both eicosanoids and cytokines<sup>26,36</sup>.

### **Pharmacodynamics**

SALOFALK<sup>®</sup> suppositories contain mesalamine (5-aminosalicylic acid, 5-ASA), the active principle of the prodrug sulfasalazine<sup>17,38-42</sup>. Although the 5-ASA mode of action is not clear, it appears to be multi-factorial. 5-ASA is thought to affect the inflammatory process through its ability to inhibit prostaglandin synthesis<sup>27-32</sup>, interfere with leukotriene synthesis and consequent leukocyte migration<sup>27,28</sup> as well as act as a potent scavenger of free radicals<sup>26</sup>. Regardless of the mode of action, 5-ASA appears to be active mainly topically rather than systemically<sup>43</sup>. Rectal administration as 500 or 1000 mg suppositories of mesalamine (5-aminosalicylic acid) allows for direct targeting of free 5-ASA to the sites of inflammation along the mucosal lumen of the rectum, sigmoid and distal large bowel.

### **Pharmacokinetics**

#### **Absorption**

Mesalamine (5-ASA) administered as a rectal suppository is variably absorbed. Systemic absorption of rectally administered 5-ASA is low as shown by urinary recoveries which range

from 5% to 35% of the daily dose administered<sup>40,44</sup>. In patients with ulcerative colitis treated with mesalamine 500 mg rectal suppositories, administered once every eight hours for six days, the mean mesalamine peak plasma concentration ( $C_{max}$ ) was 353 ng/mL (CV=55%) following the initial dose and 361 ng/mL (CV=67%) at steady state. The mean minimum steady state plasma concentration ( $C_{min}$ ) was 89 ng/mL (CV=89%).<sup>45</sup> Absorbed mesalamine does not accumulate in the plasma.

### **Distribution**

Mesalamine administered as rectal suppositories distributes in rectal tissue to some extent. In patients with ulcerative proctitis treated with mesalamine 1000 mg rectal suppositories, rectal tissue concentrations for 5-ASA and N-acetyl-5-ASA have not been rigorously quantified.

### **Metabolism**

Mesalamine is extensively metabolized by acetylation<sup>9,38</sup>. The only major metabolite of 5-ASA identified in man is N-acetyl-5-aminosalicylic acid (N-Ac-5-ASA)<sup>38</sup>. The site of metabolism has not been elucidated. In patients with ulcerative colitis treated with one 500 mg mesalamine rectal suppository every eight hours for 6 days, peak concentrations ( $C_{max}$ ) of N-acetyl-5-ASA ranged from 467 ng/mL to 1399 ng/mL following the initial dose and from 193 ng/mL to 1304 ng/mL at steady state.<sup>45</sup>

The influence of renal and hepatic impairment on pharmacokinetics of mesalamine has not been evaluated.

### **Excretion**

Mesalamine is eliminated from plasma mainly by urinary excretion, predominantly as N-acetyl-5-ASA. In patients with ulcerative proctitis treated with one mesalamine 500 mg rectal suppository every eight hours for six days,  $\leq 12\%$  of the dose was eliminated in urine as unchanged 5-ASA and 8-77% as N-acetyl-5-ASA following the initial dose. At steady state,  $\leq 11\%$  of the dose was eliminated as unchanged 5-ASA and 3-35% as N-acetyl-5-ASA. The mean elimination half-life was five hours (CV=73%) for 5-ASA and six hours (CV=63%) for N-acetyl-5-ASA following the initial dose. At steady state, the mean elimination half-life was seven hours for both 5-ASA and N-acetyl-5-ASA (CV=102% for 5-ASA and 82% for N-acetyl-5-ASA).<sup>45</sup>

### **STORAGE AND STABILITY**

SALOFALK<sup>®</sup> (mesalamine, 5-aminosalicylic acid, 5-ASA) suppositories must be stored below 25°C (77°F). Can be refrigerated. Keep away from direct heat, light and humidity.

### **SPECIAL HANDLING INSTRUCTIONS**

SALOFALK<sup>®</sup> (mesalamine suppositories) will cause staining of direct contact surfaces, including but not limited to fabrics, flooring, painted surfaces, marble, granite, vinyl, and enamel.

### **DOSAGE FORMS, COMPOSITION AND PACKAGING**

Each smooth light tan to grey, bullet-shaped SALOFALK<sup>®</sup> suppository contains 500 mg or 1000

mg mesalamine (5-aminosalicylic acid) that are available in strips of 6 suppositories; boxes of 30 suppositories. Non-medicinal ingredients: Witepsol H-15 (suppository wax base). SALOFALK<sup>®</sup> (mesalamine suppositories) are gluten-free and phthalate-free.

## PART II: SCIENTIFIC INFORMATION

### PHARMACEUTICAL INFORMATION

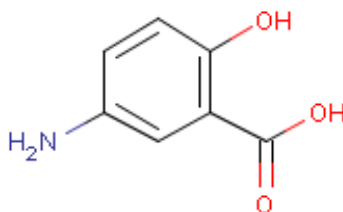
#### Drug Substance

Proper name: 5-aminosalicylic acid, mesalamine

Chemical name: 5-aminosalicylic acid (5-ASA)

Molecular formula and molecular mass:  $C_7H_7NO_3$  153.14

Structural formula:



Physicochemical properties:

Description: 5-aminosalicylic acid is a light tan to pink, needle shaped, crystalline powder.

Solubility: Slightly soluble in water, very slightly soluble in methanol and practically insoluble in chloroform; soluble in diluted HCl and diluted alkali hydroxides

Melting Range: 272°-280°C

## CLINICAL TRIALS

A double-blind, placebo-controlled multicenter study was conducted in North America in patients with mild to moderate active proctitis. The primary measures of efficacy were clinical disease activity index [DAI], sigmoidoscopic and histological evaluations. The dosage regimen was 500 mg mesalamine three times daily (1.5 g/day). A total of 79 patients were studied (39 patients received mesalamine suppositories, and 40 patients received placebo). Patients were evaluated clinically and sigmoidoscopically after three and six weeks of suppository treatment. Patients were 17 to 73 years of age (mean = 39 years), 57% were female, and 97% were white. Patients had an average extent of proctitis (upper disease boundary) of 10.8 cm and 84% of patients had multiple prior episodes of proctitis.

Compared to placebo, mesalamine suppository treatment was statistically ( $p < 0.01$ ) superior with respect to improvement in stool frequency, rectal bleeding, mucosal appearance, and disease severity. Mesalamine-treated patients had an 80.4% mean reduction in DAI ( $p < 0.05$ ) compared to placebo (36.8%) and 84.4% of mesalamine patients were considered 'much improved' by the investigator ( $p < 0.01$ ) at 6 weeks. Daily diary records revealed a significant improvement in rectal bleeding in the mesalamine-treated patients ( $p < 0.05$ ) within the first week compared to placebo indicating a faster onset of action. The effectiveness of mesalamine suppositories was statistically significant irrespective of sex, extent of proctitis, duration of current episode or duration of disease.

## DETAILED PHARMACOLOGY

### Animal Studies

5-ASA (mesalamine) is the active moiety of the prodrug sulfasalazine which acts to suppress inflammatory bowel disease. Animal pharmacology tests were conducted on 5-ASA using the oral route of administration for most tests, at a dose of 500 mg/kg in order to simulate practice relevant conditions. No adverse effect of 5-ASA on the following parameters or in the following animal pharmacology tests could be established: tremorine antagonism, hexobarbital sleep time, motor activity, anticonvulsant action (metrazol and electric shock), blood pressure, heart rate, respiratory rate (up to 10 mg/kg, i.v.), tocolysis (antispasmodic assay), local anaesthesia, antihyperthermal and antipyretic effects. In the paw-edema test with carrageen injection, 200 mg/kg *per os* proved ineffective, but 500 mg/kg 5-ASA *per os* exhibited mild antiphlogistic action.

In the animal renal function tests (natriuresis and diuresis), no biologically relevant effects of 200 mg/kg *per os* were demonstrated. After 600 mg/kg, marked functional changes were observed: increases in total urinary output, natriuresis and proteinuria. The urinary sediment contained an increased number of erythrocytes and epithelial cells. Both potassium elimination and specific weight were reduced. It can be concluded from these experiments that even high doses of 5-ASA have no effect on vital parameters. Disturbances in renal function are to be expected only at dosages equivalent to a single dose at least 8 to 10 times the daily dose in man.

## **Human Studies**

See Action and Clinical Pharmacology.

## **TOXICOLOGY**

### **Long-term Toxicity**

Animal studies to date show the kidney to be the only significant target organ for 5-ASA toxicity in rats and dogs. At high doses, the lesions produced consisted of papillary necrosis and multifocal proximal tubular injury. In rats, the no-effect levels were 160 mg/kg/day for females and 40 mg/kg/day for males (minimal and reversible tubular lesions seen) after 13 weeks of oral administration. In dogs, the no-effect level in both males and females was 40 mg/kg/day after 6 months of oral administration. In this six-month oral toxicity study in dogs, doses of 80 mg/kg/day (about 1.4 times the recommended human intra-rectal dose, based on body surface area) and higher, caused renal pathology similar to that described for the rat. In a rectal toxicity study of mesalamine suppositories in dogs, a dose of 166.6 mg/kg (about 3.0 times the recommended human intra-rectal dose, based on body surface area) produced chronic nephritis and pyelitis. Aside from gastric lesions, heart lesions and bone marrow depression seen in some of the rats at the 640 mg/kg level and considered secondary effects of kidney damage, no other signs of systemic toxicity were noted at daily doses up to 160 mg/kg in rats and 120 mg/kg in dogs for 13 weeks and six months, respectively.

In the 12-month oral toxicity study in dogs, keratoconjunctivitis sicca (KCS) occurred at oral doses of 40 mg/kg/day (about 0.72 times the recommended human intra-rectal dose, based on body surface area) and above<sup>46</sup>.

### **Carcinogenicity**

Administration of doses of 0, 50, 100 and 320 mg/kg/day for 127 weeks in rats did not result in significant differences in unscheduled deaths, clinical signs, nodules or masses, between groups. Ophthalmoscopic investigations revealed no treatment-related changes. Treatment with SALOFALK<sup>®</sup> was not associated with oncogenic changes or an increased tumor risk. The assessment of hematology, clinical biochemistry and urinalysis indicated no changes of toxicological significance at 13, 26 and 52 weeks of treatment.

After 127 weeks, analysis of the lesions indicated slight substance-related and dose-dependent toxic changes as degenerative kidney damage and hyalinization of tubular basement membrane and Bowman's capsule in the 100 mg and 320 mg/kg/day groups. Ulceration of the gastric mucosa and atrophy of the seminal vesicles were also more frequent in the 320 mg/kg/day group.

### **Mutagenicity**

5-ASA was not mutagenic in the Ames test, *E. coli* reverse mutation assay, mouse micronucleus test, sister chromatid exchange assay, or in a chromosomal aberrations assay. In contrast, sulfapyridine, which is the other primary metabolite of salicylazosulfapyridine, has tested positive in certain mutagenicity tests<sup>4</sup>.



## **Reproduction Studies**

Teratology studies with 5-ASA have been performed in rats at oral doses up to 320 mg/kg/day and in rabbits at oral doses up to 495 mg/kg/day (about 1.7 and 5.4 times the recommended human intra-rectal dose, respectively). The battery of tests completed to date has shown that 5-ASA is devoid of embryotoxicity and teratogenicity in rats and rabbits; that it does not affect male rat fertility after five weeks of oral administration at 296 mg/kg/day; and that it lacks the potential to affect late pregnancy, delivery, lactation or pup development in rats.

## **Other Studies**

### **Nephrotoxic potential of 5-aminosalicylic acid:**

Owing to its structural relationship to phenacetin, the aminophenols and salicylates, 5-ASA was included in a series of compounds studied following identification of antipyretic-analgesic nephropathy in humans. Calder *et al.* has reported in rats that in addition to the proximal tubule necrosis seen with acetylsalicylic acid (e.g. Aspirin<sup>®</sup>) and phenacetin derivatives, 5-ASA produced papillary necrosis, following single intravenous doses ranging from 150 mg/kg to 872 mg/kg<sup>47-49</sup>.

Diener *et al.*<sup>50</sup> have shown that oral doses of 5-ASA of 30 mg/kg and 200 mg/kg daily for four weeks failed to produce any adverse effects on kidney function or histology in rat.

In a 13-week rat study, there were no renal lesions after four weeks in the animals receiving up to 160 mg/kg orally per day, but severe papillary necrosis and proximal tubular injury were seen in most animals receiving 640 mg/kg orally per day. At 13 weeks, the female animals were free of pathology up to 160 mg/kg; minimal and reversible lesions in the tubules occurred in a few males (with no changes in renal function) at the 40 mg/kg/day level. After six months of oral administration in dogs, no toxicity was seen in the 40 mg/kg/day group. At 80 mg/kg/day, two of eight treated dogs showed slight to moderate renal papillary necrosis. These dogs as well as two others showed minimal to moderate tubular lesions. At 120 mg/kg/day, two females had slight papillary necrosis. These and two others showed minimal to moderate tubule injury.

### **5-ASA rectal irritation challenge in dogs:**

A rectal mucosa irritation study was designed and conducted to determine if 5-ASA rectal suspension causes any mucosal tissue stress either histologically or macroscopically. The test was carried out blind against placebo, administering one rectal suspension per day.

Treated dogs (n = 10) received 2.0 g of 5-ASA which was retained for an average of 5.5 hours over the 27-day study. The placebo group (n = 6) received suspensions of the same vehicle composition, but without 5-ASA. Calcium carbonate and food colouring were used in place of 5-ASA to mimic its appearance in the suspension formula. The rectal suspension control group (n = 2) received physiological saline enemas of equivalent volume daily. Seven days prior to dosing and after Days 15 and 30, all animals were given a proctologic examination with rectal biopsy. The histopathology data revealed no signs of significant irritation in either the treated or the control group. There was an increased incidence of edema of the lamina propria of the rectum in both the treated and control groups. These lesions represent the mildest form of

inflammation normally expected in the rectum. This mucosal inflammation is a completely reversible alteration and is probably the result of mild superficial irritation. There was no significant difference in the incidence and or severity of these changes between the treated and control groups.

The anorectal examination data revealed no signs of irritation in either treated or control group animals. The amount of mucus present in the rectum increased with time in all dogs, but did not exceed minimal severity. There was no significant difference between treated and control groups in the incidence and/or degree of severity of anorectal examination.

In conclusion, these data indicated no significant rectal mucosal tissue irritation in dogs related to the daily rectal administration of 2 g of 5-aminosalicylic acid rectal suspension over a period of 27 days.

## REFERENCES

1. MICROMEDEX<sup>®</sup>: Mesalazine. DRUGDEX<sup>®</sup> Evaluations. April 2010.
2. Lowry PW, Franklin CL, Weaver AL, Szumlanski CL, Mays DC, Loftus EV, et al. Leucopenia resulting from a drug interaction between azathioprine or 6-mercaptopurine and mesalamine, sulphasalazine, or balsalazide. *Gut* 2001; 49(5):656-64.
3. Dewit O, Vanheuverzwyn R, Desager JP, Horsmans Y. Interaction between azathioprine and aminosaliculates: an in vivo study with Crohn's disease. *Aliment Pharmacol Therap* 2002; 16(1):79-85.
4. Witt KL, Bishop JB, McFee AF, Kumaroo V. Induction of chromosomal damage in mammalian cells in vitro and in vivo by sulfapyridine or 5-aminosalicylic acid. *Mutat Res* 1992; 283(1):59-64.
5. Amin HE, Della Siega AJ, Whittaker JS, Munt B. Mesalamine-induced chest pain: A case report. *Can J Cardiol* 2000; 16(5):667-9.
6. Stasinopoulou P, Kaziani A, Mantzaris G, Roussos A, Skoutelis A. Parallel manifestation of Crohn's disease and acute pericarditis: A report of two cases. *Int J Colorectal Dis.* 2007; 22:1123-25.
7. Cappell MS, Turkieh A. Chronic pericarditis and pericardial tamponade associated with ulcerative colitis. *Dig Dis Sci* 2008; 53:149-54.
8. Singleton JW, Law DH, Kelley ML, Mekhjian HS, Sturdevant RA. National Cooperative Chron's Disease Study: Adverse reactions to study drugs. *Gastroenterology* 1979; 77(4Pt 2):870-82.
9. Christensen LA. 5-Aminosalicylic acid containing drugs. Delivery, fate and possible clinical implications in man. *Dan Med Bull* 2000; 47(1):20-41.
10. Klotz U, Haring-Kaim A. Negligible excretion of 5-aminosalicylic acid in breast milk. *Lancet* 1993; 342(8871):618-9.
11. Jenss H, Weber P, Hartmann F. 5-Aminosalicylic acid and its metabolite in breast milk during lactation. *Am J Gastroenterol* 1990; 85(3):331.
12. Silverman DA, Ford J, Saw I, Probert C. Is mesalazine really safe for use in breastfeeding mothers? *Gut* 2005; 54:169-73.
13. Ito S, Blajchman A, Stephenson M, Eliopoulos C, Koren G. Prospective follow-up

- of adverse reactions in breast-fed infants exposed to maternal medication. *Am J Obstet Gynecol* 1993; 168(5):1393-9.
14. Nelis GF. Diarrhoea due to 5-aminosalicylic acid in breast milk. *Lancet* 1989; 1(8634):383.
  15. American Academy of Pediatrics. The transfer of drugs and other chemicals into human milk. *Pediatrics* 2001; 108(3):776-89.
  16. Campieri M., Lanfranchi G, Brignola C, Bazzocchi G, Miguzzi M, Calari M. 5-Aminosalicylic acid as rectal enema in ulcerative colitis patients unable to take sulfasalazine. *Lancet* 1984; 1(8373):403.
  17. Campieri M, Lanfranchi GA, Brignola C, Bazzocchi G, Miguzzi MR, Giochetti P. High-dose 5-aminosalicylic acid enemas in the treatment of ulcerative colitis. *Intern Med Specialist* 1984; 5:164-171.
  18. Young BA, McLeod RS, Cohen Z. Exacerbation of ulcerative colitis following administration of 5-ASA enemas. *Can J Gastroenterology* 1989; 3(2):50-2.
  19. Rachmilewitz D. Coated mesalazine (5-aminosalicylic acid) versus sulphasalazine in the treatment of active ulcerative colitis: A randomized trial. *Br Med J* 1989; 298(6666):82-86.
  20. Sachedina B, Saibil F, Cohen LB, Whittey J. Acute pancreatitis due to 5-aminosalicylate. *Ann Intern Med* 1989; 110(6):490-2.
  21. May B. Treatment of chronic inflammatory bowel diseases. A study of mesalazine under conditions of practice with more than 1700 patients.. *Munch Med Wschr* 1987; 129(43):786-789 (Published in German).
  22. Welte T, Hamm H, Fabel H. Mesalazine alveolitis. *The Lancet* 1991; 338:1273.
  23. Dew MJ, Hughes PJ, Harries AD, Williams G, Evans BK, Rhodes J. Maintenance of remission in ulcerative colitis with oral preparations of 5-aminosalicylic acid. *Br Med J* 1982; 285: (6347):1012 & 1355.
  24. Malonne H, Fontaine J. Drug interactions: II. Interactions encountered in digestive diseases. *J Pharm Belg* 1997; 52(2):65-68.
  25. World Health Organization. *Weekly Epidemiological Record*. 1998; 73:241-8.  
<http://www.who.int/docstore/wer/pdf/1998/wer7332.pdf>
  26. Ahnfelt-Ronne, Nielsen OH. The anti-inflammatory moiety of SAS 5-aminosalicylic acid is a radical scavenger. *Agents and Actions* 1987; 21(1-2):191-4.

27. Ligumsky M, Karmeli F, Sharon P, Zor U, Cohen F, Rachmilewitz D. Enhanced thromboxane A<sub>2</sub> and prostacyclin production in ulcerative colitis and its inhibition by steroids and sulfasalazine. *Gastroenterology* 1981; 81:444-9.
28. Goldin E, Rachmilewitz D. Prostanoids cytoprotection for maintaining remission in ulcerative colitis. Failure of 15(R), 15-methylprostaglandin E<sub>2</sub>. *Digest Dis Sci* 1983; 28:807-811.
29. Sharon P, Ligumsky M, Rachmilewitz D, Zor U. Role of prostaglandins in ulcerative colitis. Enhanced production during active disease and inhibition by sulfasalazine. *Gastroenterology* 1978; 75(4):638-40.
30. Smith PR, Dawson DJ, Swan CH. Prostaglandin synthetase activity in acute ulcerative colitis: Effects of treatment with sulphasalazine, codeine phosphate and prednisolone. *Gut* 1979; 20(9):802-5.
31. Harris DW, Smith PR, Swan CH. Determination of prostaglandin synthetase activity in rectal biopsy material and its significance in colonic disease. *Gut* 1978; 19(10):875-7.
32. Sircar JC, Schwender CF, Carethers ME. Inhibition of soy bean lipoxygenase by sulfasalazine and 5-aminosalicylic acid: A possible mode of action in ulcerative colitis. *Biochem Pharmacol* 1983; 32(1):170-2.
33. Patterson DJ, Colony PC. Anti-secretory effects of sulfasalazine and 5-aminosalicylic acid in experimental colitis. *Gastroenterology* 1983; 1271.
34. Musch MW, Miller RJ, Field M, Siegel MI. Arachidonic acid metabolism and colonic secretion. *Gastroenterology* 1983; 84(5):1062-3.
35. Gionchetti P, Guarneri C, Campieri M, Belluzzi A, Brignola C, Iannone P, et al. Scavenger effect of sulfasalazine, 5-aminosalicylic acid and olsalazine on superoxide radical generation. *Dig Dis Sci* 1991; 36(2):174-8.
36. Nielson OH, Bouchelouche PN, Berild D, Ahnfelt-Ronne I. Effect of 5-aminosalicylic acid and analogous substances on superoxide generation and intracellular free calcium in human neutrophilic granulocytes. *Scan J Gastroenterol* 1993; 28(6):527-32.
37. Pearson DC, Jourdeuil, Meddings JB. The anti-oxidant properties of 5-aminosalicylic acid. *Free Radic Biol Med* 1996; 21(3):367-73.
38. Schroder H, Campbell DES. Absorption, metabolism, and excretion of salicylazosulfapyridine in man. *Clin Pharmacol Ther* 1972; 13:539-551.

39. Azad Khan AK, Piris J, Truelove SC. An experiment to determine the active therapeutic moiety of sulfasalazine. *Lancet* 1977; 2(8044):892-5.
40. van Hees PAM, Bakker JH, van Tongeren JHM. Effect of sulfapyridine, 5-aminosalicylic acid, and placebo in patients with idiopathic proctitis: A study to determine the active therapeutic moiety of sulfasalazine, in man. *Gut* 1980; 21(7):632-635.
41. Fischer C, Maier K, Stumpf E, von Gaisberg U, Klotz U. Disposition of 5-aminosalicylic acid, the active metabolite of sulfasalazine, in man. *Eur J Clin Pharmacol* 1983; 25(4):511-515.
42. Sutherland LR, Martin F. 5-Aminosalicylic acid enema in the maintenance of remission in distal ulcerative colitis and proctitis. *Can J Gastroenterology* 1987; 1(1):3-6.
43. Klotz U. Clinical pharmacokinetics of sulfasalazine its metabolites and other prodrugs of 5-aminosalicylic acid. *Clin Pharmacokinetic* 1985; 10(4):285-302.
44. Williams CN, Haber G, Aquino JA. Double-blind, placebo-controlled evaluation of 5-ASA suppositories in active distal proctitis and measurement of extent of spread using <sup>99m</sup>Tc-labeled 5-ASA suppositories. *Digestive Diseases and Sciences* 1987; 32(12):71S-75S.
45. Aumais G, Lefebvre M, Tremblay C, Bitton A et al. Rectal tissue, plasma and urine concentrations of mesalazine after single and multiple administrations of 500 mg suppositories to healthy volunteers and ulcerative proctitis patients. *Aliment Pharmacol Therap* 2003; 17:93-97.
46. Barnett KC, Joseph EC. Keratoconjunctivitis sicca in the dog following 5-aminosalicylic acid administration. *Human Toxicol* 1987; 6:377-83.
47. Calder IC, Funder CC, Green CR, Ham KN, Tange JD. Comparative nephrotoxicity of aspirin and phenacetin derivatives. *Br Med J* 1971; 4(786):518-521.
48. Calder IC, Funder CC, Green CR, Ham KN, Tange JD. Nephrotoxic lesions from 5-aminosalicylic acid. *Br Med J* 1972; 1:152-154.
49. Calder IC, Williams PJ, Woods RA, Funder CC, Green CR, Ham KN, et al. Nephrotoxicity and molecular structure. *Xenobiotica* 1975; 5(5):303-307.
50. Diener U, Tuzek HV, Fischer C, Maier K, Klotz U. Renal function was not impaired by treatment with 5-aminosalicylic acid in rats and man. *Arch Pharmacol* 1984; 326(3):278-82.

51. Hanauer S. Ulcerative Proctitis. *Practical Gastroenterology* 1991; Special Suppl:10-14.
52. Schroeder KW. Role of mesalazine in acute and long-term treatment of ulcerative colitis and its complications. *Scan J Gastroenterol* 2002; 37(Suppl 236):42-7.
53. Williams CN. Efficacy and tolerance of 5-aminosalicylic acid suppositories in the treatment of ulcerative proctitis: A review of two double-blind, placebo controlled trials. *Can J Gastroenterol* 1990; 4(7):472-475.
54. Bouhanick B, Fauvel J, Pont F. Biochemical misdiagnosis of pheochromocytoma in patients treated with sulfasalazine. *JAMA* (2010) 304: 1898-1901.
55. Ito T, Imai T, Kikumori T, Shibata A, Horiba T, Kobayashi H, Sawaki M, Watanabe R, Nakao A, Kiuchi T. Adrenal incidentaloma: review of 197 patients and report of a drug-related false-positive urinary normetanephrine result. *Surg. Today* (2006) 36: 961-965.
56. Walsh N. Sulfasalazine induced falsely positive urinary catecholamines. *Rheumatology New's* 5(8), 11.2006

**PART III: CONSUMER INFORMATION**

Pr SALOFALK®  
**Mesalamine Suppositories**  
**500 mg, 1000 mg**

**This leaflet is part III of a three-part "Product Monograph" and is designed specifically for Consumers. This leaflet is a summary and will not tell you everything about SALOFALK®. Contact your doctor or pharmacist if you have any questions about the drug.**

**ABOUT THIS MEDICATION****What the medication is used for:**

SALOFALK® suppositories 500 or 1000 mg, are used in the management of ulcerative proctitis (inflamed rectum) and as adjunctive therapy in more extensive distal ulcerative colitis (inflammation of the lining of the large bowel and rectum).

**What it does:**

SALOFALK® is believed to work by interfering in the activity of certain mediators of inflammation (e.g., prostaglandins) which helps reduce the inflammation (swelling and pain) in the rectum and lower part of the large bowel.

**When it should not be used:**

SALOFALK® should not be used if:

- patients with severe kidney (renal) impairment (GFR<30ml/min/1.73m<sup>2</sup>) and/or severe liver (hepatic) impairment (see WARNINGS AND PRECAUTIONS)
- You are allergic to mesalamine or to any ingredient in the formulation (see **What the non-medicinal ingredients are**)
- You have a sensitivity to salicylates, for example acetylsalicylic acid (Aspirin®)
- You have stomach or small intestinal ulcers
- You have urinary tract obstructions
- The patient is an infant under two years of age

**What the medicinal ingredient is:**

SALOFALK® contains mesalamine (me-SAL-a-meen), also known as 5-aminosalicylic acid, 5-ASA or mesalazine.

**What the non-medicinal ingredients are:**

SALOFALK® suppositories contain Witepsol H-15 (suppository wax base). SALOFALK® Suppositories are gluten-free and phthalate-free.

**What dosage forms it comes in:**

SALOFALK® suppositories 500 or 1000 mg are available in strips of 6 suppositories; boxes of 30 suppositories.

**WARNINGS AND PRECAUTIONS**

BEFORE you use SALOFALK® talk to your doctor or pharmacist if:

- You have a pre-existing liver disease. There have been reports of hepatic failure and increased liver enzymes in patients treated with 5-ASA or mesalazine (=mesalamine) products
- You have mild to moderate liver function impairment. Your doctor will decide if this product is right for you
- You ever had any unusual or allergic reaction to mesalamine (5-ASA), sulfasalazine (SAS), or salicylates (Aspirin®)
- You have liver or kidney disease
- You have bleeding or clotting disorders
- Your doctor has said you have higher than normal blood urea nitrogen (BUN) levels (renal function test)
- You are pregnant or breastfeeding. Mesalamine is excreted in human breast milk. Discuss with your doctor.

WHILE using SALOFALK®:

- Discontinue use at first sign of rash or fever.

You may have your blood or urine tested regularly to monitor your kidney function since prolonged use of SALOFALK® may damage your kidneys.

**INTERACTIONS WITH THIS MEDICATION**

Interaction between azathioprine, 6-mercaptopurine and aminosaliclates (such as SALOFALK®) has been reported.

Drug interactions with coumarin, methotrexate, probenecid, sulfapyrazone, spironolactone, furosemide, rifampicin and Varicella Virus Vaccine (chicken pox vaccine) may be possible.

Possible interference with measurements, by liquid chromatography, of urinary normetanephrine causing a false-positive test result have been observed in patients exposed to sulfasalazine or its metabolite, mesalamine/mesalazine.

**PROPER USE OF THIS MEDICATION****Usual adult dose:**

One 500 mg SALOFALK® suppository is self-administered on a twice a day or three times a day basis. One 1000 mg SALOFALK® suppository is self-administered on a once daily basis, at bedtime. The usual adult dose is 1.0 - 1.5 g/day and dosing is continued until a significant response is achieved or until the patient achieves remission. Dose tapering is recommended. Abrupt discontinuation is not recommended. Best results are expected with prolonged



retention.

The suppository should be retained in the rectum for one to three hours or longer, if possible, to achieve the maximum benefit.

**How to use SALOFALK® suppositories:**

NOTE: SALOFALK® suppositories will cause staining of direct contact surfaces, including but not limited to fabrics, flooring, painted surfaces, marble, granite, vinyl, and enamel.

**Patient Instructions:**

- Detach one suppository from the strip of suppositories.
- Hold suppository upright and carefully remove the plastic wrapper.
- Avoid excessive handling of suppository, which is designed to melt at body temperature.
- Insert suppository completely into rectum with gentle pressure, pointed end first.
- A small amount of lubricating gel may be used on the tip of the suppository to assist insertion.

**Overdose:**

If you believe you have used too much, or in case of accidental oral ingestion, contact your doctor, hospital emergency department or regional Poison Control Centre immediately, even if there are no symptoms.

**Missed Dose:**

If you miss a dose of SALOFALK®, use it as soon as possible, unless it is almost time for the next dose. Do not use two SALOFALK® suppositories at the same time to make up for a missed dose.

**SIDE EFFECTS AND WHAT TO DO ABOUT THEM**

Rash, fever, and dizziness are common in patients allergic to sulfasalazine. Stop therapy at the first sign of a rash and contact your doctor.

Worsening of ulcerative colitis may occur and may include the following symptoms: abdominal or stomach cramps or pain (severe) and diarrhoea.

Other reported side effects reported with SALOFALK® suppositories include abdominal cramps, abdominal pain or discomfort, anal itching, anorectal discomfort, bloating, constipation, cough, diarrhoea, dizziness, flatulence, fever, frequent bowel movements, hair loss, headache, itching, lower back pain, mucus in stools, nausea, pain, painful bowel movements, rash, rectal discharge, rectal pain, stools discoloured and vomiting.

| <b>SIDE EFFECTS, HOW OFTEN THEY HAPPEN AND WHAT TO DO ABOUT THEM</b> |  |  |                     |  |
|--|--|--|---------------------|--|
| <b>Symptom / effect</b>  |  | <b>Talk with your doctor or pharmacist</b> |                     | <b>Stop taking drug and call your doctor or pharmacist</b> |
|  |  | <b>Only if severe</b>                      | <b>In all cases</b> |  |
| <b>Uncommon</b>  | Chest pain   |  |                     | ✓  |
| <b>Unknown</b>   | Pancreatitis (inflammation of the pancreas) with symptoms such as abdominal pain, nausea, vomiting, fever, rapid heartbeat, and feeling tired.   |  |                     | ✓  |
|  | Allergic (hypersensitivity) reaction with symptoms such as rash, itching, fever, swelling of the mouth and throat, difficulty in breathing.  |  |                     | ✓  |
|  | Myocarditis/ Pericarditis (inflammation of the heart muscle and lining around the heart) with symptoms such as abnormal heartbeat, fatigue, fever, difficulty in breathing, accumulation of fluid in the lung, and coughing. |  |                     | ✓  |
|  | Liver problems with symptoms such as severe abdominal pain, nausea, vomiting, yellowing of the skin and eyes, drop in appetite, bloating and distension.   |  |                     | ✓  |

**SIDE EFFECTS, HOW OFTEN THEY HAPPEN AND WHAT TO DO ABOUT THEM**

| Symptom / effect | Talk with your doctor or pharmacist  |              | Stop taking drug and call your doctor or pharmacist |
|------------------|--|--------------|---|
|                  | Only if severe   | In all cases |   |
| Unknown          | Acute intolerance syndrome with symptoms such as cramping, stomach pain, bloody and excessive stools, fever, headache and rash.  |              | ✓   |
|                  | Interstitial pneumonia (lung abnormality with scarring) with symptoms such as difficulty in breathing, dry cough, fever, and persistent unwell feeling.  |              | ✓   |
|                  | Aplastic anaemia (shortage of one or more types of blood cells) with symptoms such as fatigue, difficulty in breathing with exertion, rapid or irregular heartbeat, pale skin, frequent or prolonged infections, unexplained or easy bruising, nosebleeds and bleeding gums, prolonged bleeding from cuts, skin rash, dizziness, and headache. |              | ✓   |

*This is not a complete list of side effects. For any unexpected effects while taking SALOFALK<sup>®</sup>, contact your doctor or pharmacist.*

**HOW TO STORE IT**

SALOFALK<sup>®</sup> suppositories must be stored below 25°C (77°F). Can be refrigerated. Keep away from direct heat, light and humidity. Keep out of reach of children.

**REPORTING SUSPECTED SIDE EFFECTS**

You can report any suspected adverse reactions associated with the use of health products to the Canada Vigilance Program by one of the following 3 ways:

- Report online at [www.healthcanada.gc.ca/medeffect](http://www.healthcanada.gc.ca/medeffect)
- Call toll-free at 1-866-234-2345
- Complete a Canada Vigilance Reporting Form and:
  - Fax toll-free to 1-866-678-6789, or
  - Mail to: Canada Vigilance Program  
Health Canada  
Postal Locator 0701D  
Ottawa, Ontario  
K1A 0K9

Postage paid labels, Canada Vigilance Reporting Form and the adverse reaction reporting guidelines are available on the MedEffect<sup>™</sup> Canada Web site at [www.healthcanada.gc.ca/medeffect](http://www.healthcanada.gc.ca/medeffect).

*NOTE: Should you require information related to the management of side effects, contact your health professional. The Canada Vigilance Program does not provide medical advice.*

**MORE INFORMATION**

This document plus the full product monograph, prepared for health professionals can be found at: <http://www.aptalispharma.com> or by contacting the sponsor, Aptalis Pharma Canada Inc., at: 1-800-565-3255

This leaflet was prepared by Aptalis Pharma Canada Inc. Last revised: December 30, 2014

SALOFALK<sup>®</sup> is a registered trademark of Aptalis Pharma Canada Inc.

Aspirin<sup>®</sup> is a registered trademark of Bayer Aktiengesellschaft.

